



# ACCESS LEGEND

# RATINGS



## ACCESSIBLE

A green pin on our map represents an accessible location. These are places without barriers. Experiences may vary from person to person but we generally say that accessible places are those that you can get in with ease, and party no problem.



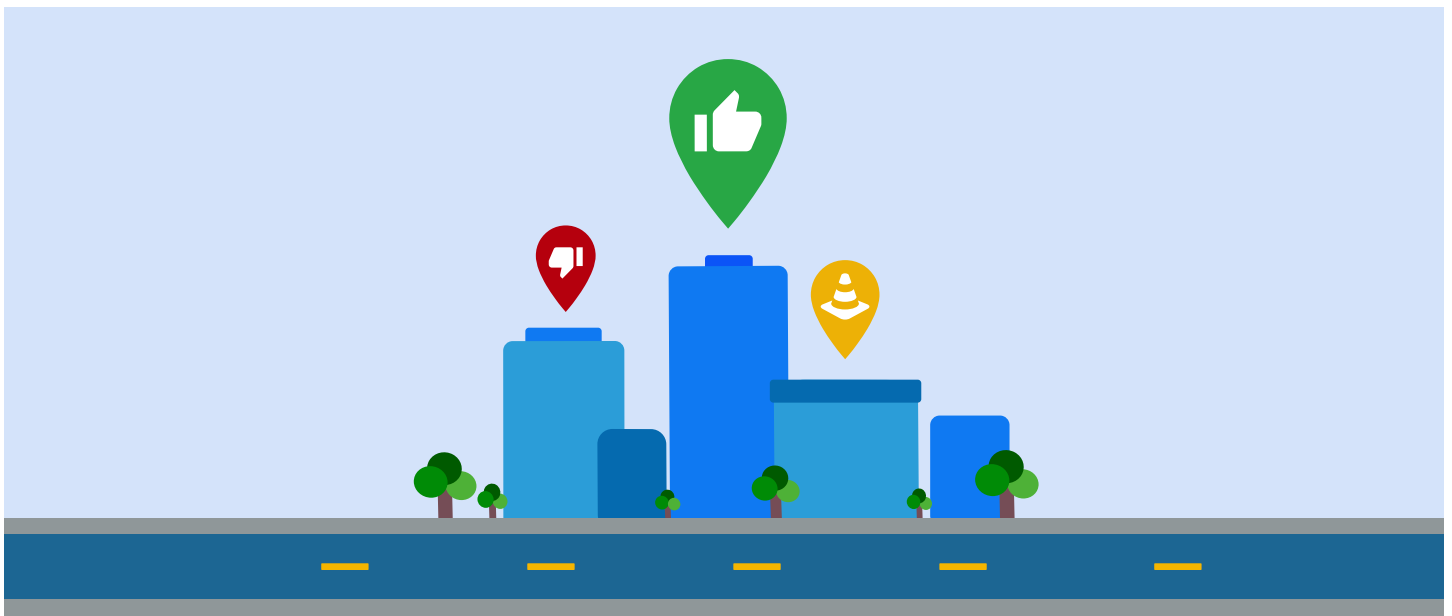
## PARTIALLY ACCESSIBLE

A yellow pin on our map represents a location that is partially accessible. Yellow locations often have alternative entrances or limited access within the space, such as steps inside or narrow hallways. Not everything about these places is barrier-free.



## NOT ACCESSIBLE

A red pin on our map represents a location that is not accessible. Find a red pin on our map? Why not tweet @AccessNowApp about it and let's make change happen. The more we raise awareness about inaccessible places, the closer we are to breaking barriers.



# TAGS

## ENTRANCE



### ACCESSIBLE PARKING

Refers to parking spaces that are marked accessible because they are wider for vehicle ramps and lifts. These spots usually offer ease of access to the main location.



### ALTERNATIVE ENTRANCE

An alternate accessible entrance is available usually at the side or back of a building. Alternative entrances might include features like a ramp or entryway at street-level.



### AUTOMATIC DOOR

There is an automatic door present (usually at the entrance of the location). An automatic door may be activated by a button, gesture, or simply by moving close enough to the door.



### ONE STEP AT ENTRANCE

There is a single step at the entrance of the location.



### OUTDOOR ACCESS ONLY

Access to services are available, but only outdoors. Could include restaurant patios, park space, concert venues, etc.



### RAMP

A ramp is one of the most common accessibility features. A ramp creates a gradual change in grade, sometimes over steps, to create a barrier-free experience.

# TAGS

## WASHROOM

### **ACCESSIBLE WASHROOM**

An accessible washroom can be a private singular room, or a designated accessible stall within a washroom. They have step-free access, emergency call systems, grab bars, automatic features, are typically more spacious, and have barrier free access to sinks.

### **AUTOMATIC FEATURES**

This includes automatic flush toilets, automatic soap and paper dispensers, automatic faucets. If they are not electronically controlled, they can be lever-operated, push or touch controlled but usable with one hand without the need to tightly grasp, pinch or twist the wrist.

### **BARRIER FREE SINK**

Sink should be mounted at a decent height from the floor and should have enough clearance underneath for the knees, to be barrier-free.

### **CHANGE TABLE/BENCH**

Accessible benches allow people to transfer to the bench for use in washrooms, changing rooms, saunas, etc. It has clear floor space, offers support, or is affixed to a wall. Some are designed only for children, while others are accessible for adults as well.

### **GENDER NEUTRAL**

A gender neutral washroom are toilet facilities that can be used by people of any gender. This can make things easier for caregivers whose gender is not the same as the person they are helping. They are clearly identified and accessible.

# TAGS

## GENERAL

### AUDITORY SIGNALS

Auditory signals/cues use sound to give you information. For example, subway announcements, pedestrian crosswalk beeping, or feedback while using a mobile device. This includes electronic chimes, voice guides, and alarm sounds.

### BRAILLE

There is braille present. This could be on menus, washroom signs, price tags, location signage, etc.

### CUSTOMER SERVICE

Staff are knowledgeable with different types of access (i.e. auditory, cognitive, mobility, sensory, visual) as well as educated on how to assist people with disabilities and use inclusive language.

### DIGITAL MENU

There is a digital menu that lists goods and services. Whether it's on the business' website or a pdf, the content should be designed with accessibility in mind.

### ELEVATOR

There is an elevator available to provide access to other levels of the location.

### HANDRAILS

There is adequate railing installed, wherever needed for the comfort and safety of users. They should be mounted at a decent height, should not obstruct any path, have no sharp edges, and allow a firm and easy grip.

# TAGS

## GENERAL

### **LARGE PRINT**

This could be on menus, washroom signs, price tags, location signage, etc.

### **LIGHTING**

Bright lighting means the space is well lighted (artificial or natural) for easy visibility of all areas, pathways and features. This makes it easier for people to navigate around the space. Low lighting means the space is dimly lit or the brightness is reduced.

### **LOWERED COUNTERS**

Accessible counters are lowered to receive the goods and services provided by the business. This includes cashiers, ticketing counters, teller stations, registration counters, checkout aisles, serving counters, work surfaces, etc.

### **QUIET**

There is a quiet area available, or the entire location is a low-noise environment (like a museum).

### **SCENT FREE**

The location is clearly marked as a scent-free environment or it is written into a company policy, meaning heavy perfumes and other strong scents are not permitted.

### **SERVICE-ANIMAL FRIENDLY**

The location supports people to be accompanied by their service animals.

# TAGS

## GENERAL

### SIGN LANGUAGE

A location tagged with Sign Language is a place that has a sign language interpreter available on staff or available by request. ASL is the short form for “American Sign Language.”

### SPACIOUS

Spacious locations have enough room to maneuver within the location, such as wide hallways or places with large turning radiuses.

### STAIR LIFT

A stair lift is a motorized chair on a track that is secured to a staircase. It provides access to other levels of a multi-level location.

### TACTILE SURFACES

Tactile surface indicators are detectable under-foot when walking or by use of a white cane. They are used to alert people of potential hazards such as dangerous pathways or drop-offs. They must also provide a high tonal contrast with the surrounding surface. Tactile surfaces can be found in stairs, platforms, curb ramps, escalator approaches, pedestrian crossings, parking, reflecting pools, and building entrances.

### WHEELCHAIR SEATING

There is designated wheelchair seating available. They are easily accessible, spacious and clearly labelled. This can be found in restaurants, theaters, concert venues, parks, etc.